

Title

Authors

RWTH Aachen University

30. Juni 2011



Layouts

Start the content of the slide on top of the page...



Layouts

...or let it be centered automatically.



Layouts

Block 1

Use **blocks** to structure your slides.

Block 2

Blocks will be aligned vertically.



Layouts

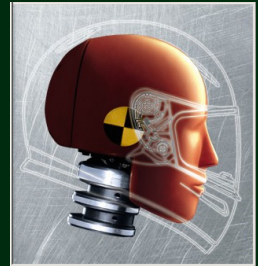
Block 1

Use **columns** for horizontal slide layouts

Block 2

Blocks will be vertically aligned in each column

Block 3



Beamer Techniques

Uncover

- Use **uncovering** for making only parts of the slide fully visible
- This helps to concentrate on the current points



Beamer Techniques

Uncover

- Use **uncovering** for making only parts of the slide fully visible
- This helps to concentrate on the current points



Beamer Techniques

Alert

- Use **alert** as another technique for emphasizing
- Focus on important details
- This helps to guide the viewer through your presentation



Beamer Techniques

Alert

- Use **alert** as another technique for emphasizing
- Focus on **important** details
- This helps to guide the viewer through your presentation



Beamer Techniques

Alert

- Use **alert** as another technique for emphasizing
- Focus on important details
- This helps to guide the viewer through your presentation



Beamer Techniques

Visible

- You may also want to place something in between points
- But already reserve the space



Beamer Techniques

Visible

- You may also want to place something in between points
- So this is our additional information
- But already reserve the space



Beamer Techniques

Only

- Use **only** to display something on one specific slide
- For example: Images to certain keypoints:
 - Image on 100% line width



Beamer Techniques

Only

- Use **only** to display something on one specific slide
- For example: Images to certain keypoints:
 - Image on 100% line width

Image



Beamer Techniques

Only

- Use **only** to display something on one specific slide
- For example: Images to certain keypoints:
 - Image on 50% line width

Image



Beamer Techniques

Only

- Use **only** to display something on one specific slide
- For example: Images to certain keypoints:
 - Image on 25% line width

Image



TikZ + Beamer

Use TikZ in LaTeX

$$\vec{a}_p = \vec{a}_o + \frac{{}^b d^2}{{dt}^2} \vec{r} + \boxed{2\vec{\omega}_{ib} \times \frac{{}^b d}{{dt}} \vec{r}} + \boxed{\vec{\alpha}_{ib} \times \vec{r}} + \boxed{\vec{\omega}_{ib} \times (\vec{\omega}_{ib} \times \vec{r})}$$

- Coriolis acceleration
- Transversal acceleration
- Centripetal acceleration



TikZ + Beamer

Use TikZ in LaTeX

$$\vec{a}_p = \vec{a}_o + \frac{b}{dt^2} \vec{r} + \boxed{2\vec{\omega}_{ib} \times \frac{b}{dt} \vec{r}} + \boxed{\vec{\alpha}_{ib} \times \vec{r}} + \boxed{\vec{\omega}_{ib} \times (\vec{\omega}_{ib} \times \vec{r})}$$

- Coriolis acceleration
- Transversal acceleration
- Centripetal acceleration



TikZ + Beamer

Use TikZ in LaTeX

$$\vec{a}_p = \vec{a}_o + \frac{b}{dt^2} \vec{r} + \boxed{2\vec{\omega}_{ib} \times \frac{b}{dt} \vec{r}} + \boxed{\vec{\alpha}_{ib} \times \vec{r}} + \boxed{\vec{\omega}_{ib} \times (\vec{\omega}_{ib} \times \vec{r})}$$

- Coriolis acceleration
- Transversal acceleration
- Centripetal acceleration

